

Kinetic crosses to a new Cape Town address

Kinetic, the specialist equipment supplier to the photographic industry has moved its Cape Town operation to a new premises all the way on the other side of the street...



Created by Panalux, Kinetic is an international supplier of cameras, lighting, grip, consumables and digital equipment to the photographic industry.

With bases in London and Cape Town, Kinetic works with some of the worlds leading photographers helping to bring their visions to life.

Steered by manager Anton White, Kinetic Cape Town has grown steadily since its inception in 2001 and has now outgrown its original Bree Street home.

Challenged with task of securing a new building for his operation Anton scoured the city, searching for a suitable premises before finally identifying the ideal spot - across the road from his existing building! This new address will allow Kinetic the space to develop and grow its business further, offering increased accessibility for clients and incorporating an extended equipment storage area to house the growing inventory required to meet the demands of the local industry.

www.go-kinetic.com

EON Productions send Daniel Craig back to the cinema seeking revenge

James Bond is heading back to the cinema aiming to follow up to on the success of 'Casino Royale'.

Panalux is extremely proud to have been working alongside cinematographer Roberto Schaefer shooting the latest outing for 007 'Quantum of Solace'.

Directed by Marc Forster, this 22nd Bond saga follows on directly from the previous adventure 'Casino Royale' in which British agent finds love then winding up betrayed, heart broken and keen to seek out revenge.

Well known for the globe trotting nature of the Bond movies, 'Quantum of Solace' proved to be no exception to the rule with cast, crew and equipment being deployed to locations in Chile, Italy and Mexico. However it was a welcome return 'home' for all involved to Pinewood Studios and in particular to the 007 stage which recent underwent a total refurbishment following the disastrous fire which left it in a state of ruin.

Centred around Bond's search to understand the reasons for betrayal by Vesper Lynd, the film picks up immediately where 'Casino Royale' left off as 007 seeks retribution for the death of his love.

Naturally it doesn't take long for the story to gain momentum and for the action to heat up as investigations uncover a plot to obtain control of a nations water supply using a

network of corruption that has managed to infiltrate the British government.

Committed to hunting down those responsible, Bond has to stay one step ahead of both his enemies and his own people as he battles to keep his desire for revenge over Vesper's death separate to the mission.



'Quantum of Solace' opens in the United Kingdom on 31st October. www.007.com

Panalux is fully operational at Pinewood Studios following a complete building refurbishment



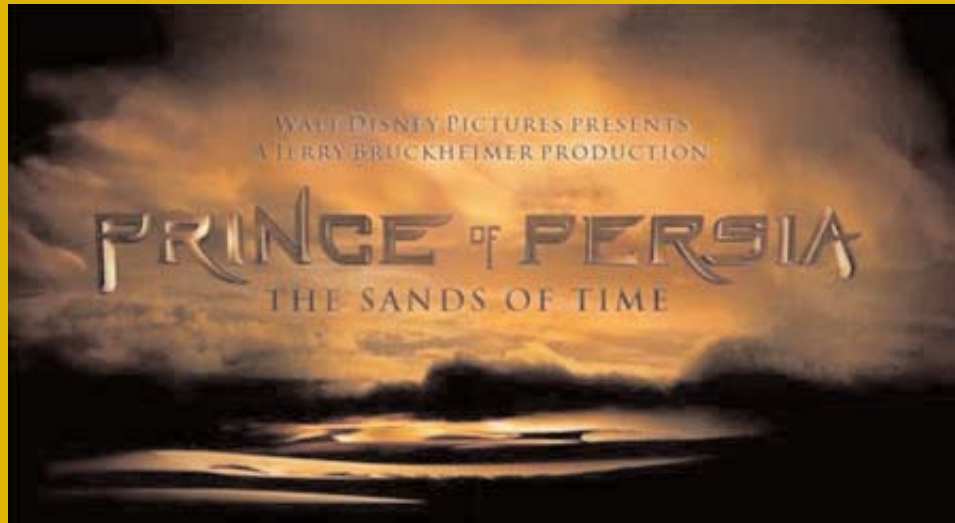
As part of an ongoing programme of investment in its worldwide operations, Panalux is pleased to announce the complete refurbishment of its Pinewood Studios base.

Both the interior and exterior of Panalux Pinewood have undergone a total refurbishment during which the building was stripped right back to its bare skeleton before being totally rebuilt.

Located adjacent to the famous 007 Stage, the new Panalux Pinewood building now incorporates a completely redesigned warehouse area which now features a mezzanine floor allowing greater storage space for the increased equipment inventory housed at the facility. Drive in loading bays offering better access along with enhanced workshop and office areas allow for a much improved working environment which complements fully the ongoing updating of the entire Pinewood Studio site.

Sands of Time set to draw video gamers into theatres

Based on the ultra successful video game Prince of Persia, the Disney live action adaptation is sure to draw attention from the legions of gamers who are much more used to directing the Prince themselves...



Currently in production, Prince of Persia : The Sands of Time, stars Jake Gyllenhaal as the adventuring Prince Dastan who teams up with actress Gemma Arterton to do battle with the evil Nazim the vizier, played by award winning actor, Ben Kingsley.

Panalux has spent the summer working with Gaffer Steve Costello to help move the saga from computer screen to cinema screen. Directed by Mike Newell and filmed by cinematographer, John Seale, principal photography has taken place on sets and locations in the Moroccan desert as well as in the cooler climate of Pinewood Studios.

Fans of the game have set websites alight discussing the translation of the game to live action, however, Disney will be banking on mega bytes turning to mega bucks when the is let loose in 2010

Prince of Persia : Sands of Time is due for release in May 2010

BTAA Craft Awards in association with Panalux

Panalux is once again proud to be sponsoring the British Television Advertising Awards which are being held in London at the beginning of December.

Formed in 1976, the BTAA was set up to offer recognition and to reward the very best television and cinema commercials being created by British advertising agencies and production companies.

In 1996, the British Television Advertising Craft Awards were introduced in order to compliment the existing awards and to give equal recognition to the 'behind the camera' crafts and skills of those involved in the art of advertising production. As keen supporters of the craft of the commercial, Panalux became the first sponsors of the awards and have remained so every year since its inception.

This year the awards are to be held on Monday 1st December and will be held at The Planit Embankment Gardens, London.

For full information including the 2008 nominees or to download a ticket application form, visit: www.btaa.co.uk

Panalux directory contact information for your local Panalux base:

PANALUX London

Waxlow Road, London NW10 7NU
United Kingdom
Tel: (+44) 020 8233 7000
Fax: (+44) 020 8233 7001

PANALUX Bristol

Unit 4, Avon Riverside Estate
Victoria Road, Avonmouth
Bristol BS11 9DB
United Kingdom
Tel: (+44) 0117 982 7364
Fax: (+44) 0117 923 5745

PANALUX Glasgow

110 Lancefield Street
Glasgow G3 8JD
United Kingdom
Tel: (+44) 0141 221 5175
Fax: (+44) 0141 248 2751

PANALUX Manchester

Manchester Road
Kearsley, Bolton BL4 8RL
United Kingdom
Tel: (+44) 01204 794000
Fax: (+44) 01204 571877

PANALUX Pinewood Studios

Pinewood Studios
Pinewood Road
Iver Heath
Buckinghamshire
SL0 0NH
United Kingdom
Tel: (+44) 020 8233 7000
Fax: (+44) 020 8233 7001

PANALUX Shepperton Studios

Shepperton Studios
Studios Road
Shepperton
Middlesex TW17 0QD
United Kingdom
Tel: (+44) 020 8233 7000
Fax: (+44) 020 8233 7001

PANALUX (SA) (pty) Limited

Cape Island Studios
3 Sanlam Business Park
Koeberg Road
Milnerton 7435
Cape Town, South Africa
Tel: (+27) 021 529 4200
Fax: (+27) 021 529 4204

PANALUX (SA) (pty) Limited

Gold Island Studios
79 Reedbuck Crescent
Corporate Park
Midrand
Johannesburg
South Africa
Tel: (+27) 011 314 5700
Fax: (+27) 011 314 5701

PANALUX s.r.o.

Barrandov Film Studios
Krizeneckeho nam. 322
152 00 Prague 5
Czech Republic
Tel: (+420) 267 072 888
Fax: (+420) 267 073 561

PANALUX Broadcast & Event

Unit 21 Derby Road
The Metropolitan Centre
Greenford
Middlesex
UB6 8UJ
United Kingdom
Tel: (+44) 020 8832 4800
Fax: (+44) 020 8832 4811

New look for the BSC website

The British Society of Cinematographers has recently given its website an overhaul to include a members area plus an enhanced insight into the society's news and views.

The British Society of Cinematographers is both a social and professional organisation. Since its formation in 1949 its prime objective has been to promote and encourage the highest standards in the art and craft of cinematography.

BSC membership, which is by invitation only, comprises of some of the most talented Directors of Photography and Camera Operators in the United Kingdom along with many distinguished associates and patrons from the film and television industry.

The new website can be viewed at: www.BSCine.com