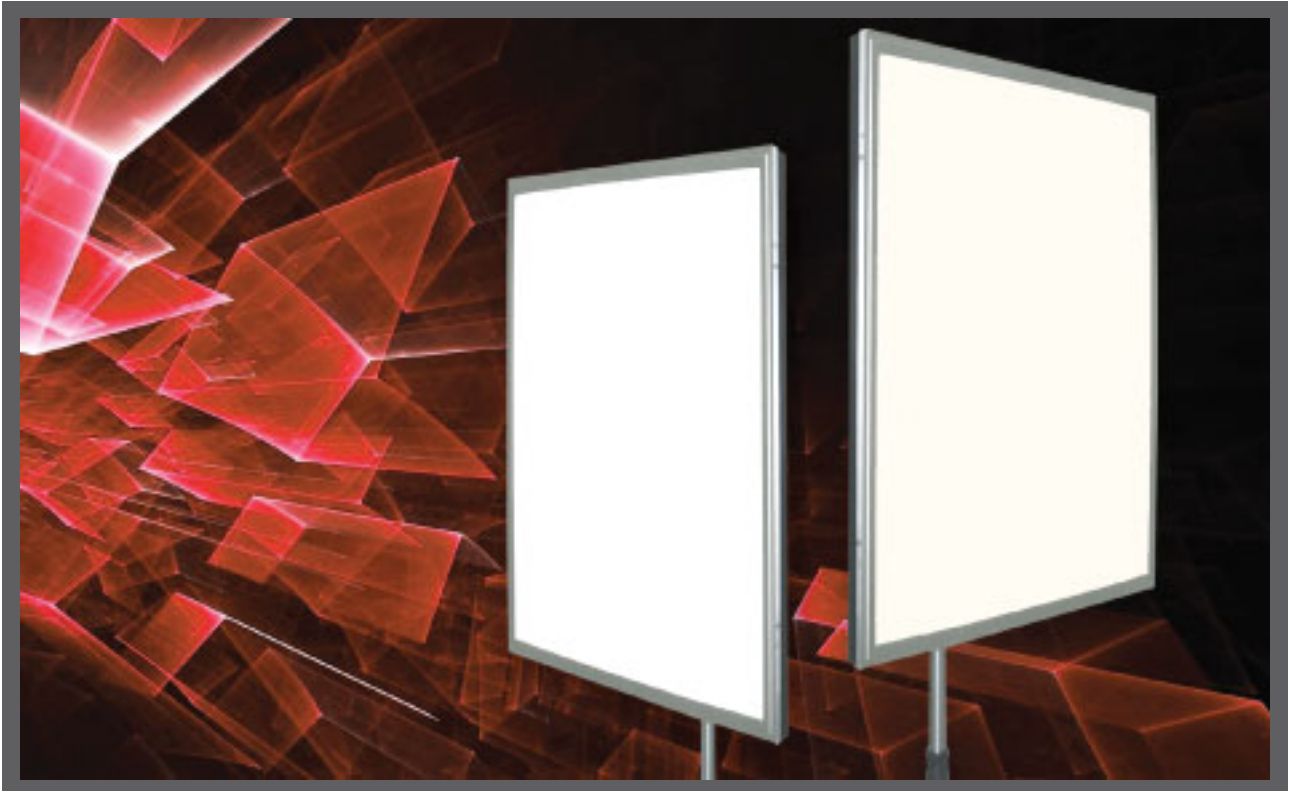


## tektile<sup>®</sup>2



### **Panalux Tektile<sup>®</sup>2**

The Panalux TekTile<sup>®</sup>2 is a super efficient, slimline Bi-Colour illumination solution created by Panalux exclusively for the film, television industry and entertainment media industries.

Featuring instantly variable colour temperature from 3000k to 5800k with no shift in light output throughout the transition via the on board Tektile<sup>®</sup>2 controller or when used in conjunction with Panalux F-stop 8way Controller units

Simple to operate and just 60cm square, Tektile<sup>®</sup>2 is perfect as an effective, balanced 'solo' soft light or can be connected to any number of additional fixtures to create unique modular lighting systems providing flexible, practical illumination solutions that you control.

Created by Panalux, a world leading source of lighting equipment and ideas, the Tektile<sup>®</sup> family of fittings are available now at your local Panalux base.

*Tektile<sup>®</sup>2 - no compromise, no substitute. Only from Panalux*

**PANALUX**

lighting • innovation • service

info@panalux.biz

**www.panalux.biz**

**High performance softlight source**

**Sleek, slimline design**

**Mains or battery power**

**Local or DMX control**

**Fully dimmable with no shift in correlated colour temperature**

**Panalux F-Stop<sup>®</sup> compatible**

**Lightweight - only 2.5kg**

**Choice of mounting and accessory options**

**Optional wireless remote**

## Dimensions

Height: 595mm  
 Width: 595mm  
 Depth: 36mm  
 Weight: 2.5Kg

## Construction

Housing: Aluminum  
 Mounting: Standard Kino® type mounting plate.  
 M12 centre insert for hook clamp or half coupler.  
 M6 insert allows interconnection to multiple Tektile®2 units to create larger light source configurations.  
 Protection rating: IP20  
 Connections: Power/data cable: 6 Pin XLR  
 (max extension length 30m per unit)  
 Electrical: Tektile®2 mode 60W @ 24v : 2.5A  
 Individual control 100W @ 24V : 4A

## Optics

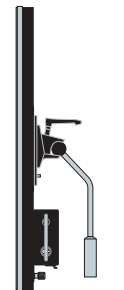
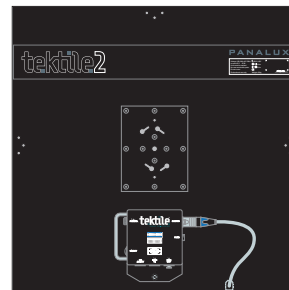
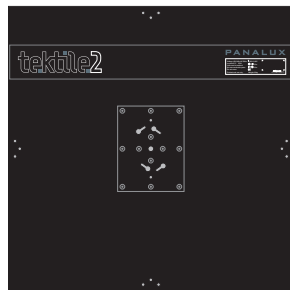
Colour temperature: 3000K to 5800K  
 Minimum lamp lifetime: 50,000  
 Standard beam angle: 170° *With egg crate accessory: 40°*  
 Light Output: 1100Lux @ 1m

## Thermal

Cooling: Silent, convection cooled  
 Maximum ambient temperature 40° C max  
 Minimum ambient temperature -5° C min

## Accessories

Egg crate  
 Custom flightcase  
 Tektile®2 single head controller  
 Panalux F-Stop 8 way (controls up to 8 units in Tektile®2 mode)  
 6 pin XLR extension cables (4m, 8m, 15m, 30m)  
 Optional wireless remote



36mm

Unit shown with Tektile Control

mounting bracket

## Control and Programming

### Control option 1: Panalux Single Tektile Controller

DMX channels: 2 per unit  
 DMX address setting: via rotational BCDs  
 Local Control: Pot1: Intensity Pot2: CTC  
 Stand-alone: Yes  
 Power input: 24V DC  
 C/W: 220V-250V 90W inline power supply unit  
 Optional: 30V battery kit

### Control option 2: Panalux F-Stop 8 Way Driver Mode 4

DMX channels: 16 per unit (18 With F-Stop® extended mode)  
 DMX address setting: via rotational BCDs on front  
 Local Control: No  
 Stand-alone: No  
 Power input: IEC 220v-250v AC  
 NOTE: Maximum 8 Heads Per F-Stop® 8 way driver  
 C/W: 16A Thru to Locking IEC

### Control option 3: Panalux F-Stop 8 Way Driver Mode 2

DMX channels: 2 per unit (4 with F-Stop® extended mode)  
 DMX address setting: via rotational BCDs on front  
 Local Control: Mode 9 - BCDs become local control adjustment  
 Stand-alone: Yes  
 Power input: IEC 220v-250v AC  
 NOTE: Max 4 heads per F-Stop® 8 Way Driver (on outputs 1,3,5,7)  
 C/W: 16A Thru to Locking IEC

### F-Stop 8 Way Modes (Tektile control)

Tektile2 Mode is identical to the Tektile®2 single controller but allows you to connect 8 heads on a single driver. The light output level remains constant while the colour temperature is adjusted. Tektile2 Mode(4) has been designed specifically to run 8 Tektile2's with the following controls:  
 Channel 1: Intensity  
 Channel 2: CTC (Colour Temperature Control)

### Mode 2 (2 channel duplicated control on all 8 outputs - 2 channels)

Mode 2 can run 4 Tektile®2's per 8-way but allows you to run them at a higher output level. Mode 2 runs the Tektile®2 with the following Controls:  
 Channel 1 : Daylight  
 Channel 2 : Tungsten

### Mode 9 (2 channel duplicated control on all 8 outputs - 2 channels)

Mode 9 can run 4 Tektile®2's per 8-way but allows you to run them at a higher output level. Mode 9 runs the Tektile®2 in manual control mode with the following Controls:  
 DMX 100 switch : Daylight  
 DMX 10 switch : Tungsten